

# S.N. an Fhaitheche

Fahy National School

Fahy, Westport.

098 41531 / 098 42004

fahyns@yahoo.ie

## Extra Curricular Activities

### Educational tours and Field Trips

- Annual educational tours
- Trips to local theatres e.g. The Linenhall Theatre.
- Arts, Crafts and P.E. Workshops
- Maths and Science Trails
- S.H.S. Musical Visit
- Heritage Field Trips

### Sports and other Activities

- Full participation in "Cumann na mBunscol" Activities
- Quizzes (e.g. Credit Union and Cumann na mBunscol)
- Gaelic Football (coached by G.A.A. Coaches)
- Swimming Lessons and Water Safety
- Cúilí (indoor hurling)
- Cross Country
- Athletics
- Soccer
- Table Tennis
- Chess lessons
- Traditional Music lessons

## Location

We are located approx. 5km from Westport, 3km from Newport and 17 km from Castlebar.

Directions and map: <http://www.autopilot.ie/to.place?place=124141>

## Introducing our neighbours: Smarties

Our neighbours, Smarties Montessori, caters for children from the ages of 2 years 10 months to 6 years. Their aim is to provide a high quality childcare and early childhood education based on the Montessori Method of Education. They will do this by providing a safe and nurturing environment designed around the needs of young children and their families. The school is run by Claire Morahan who has over eleven years experience as a Montessori teacher. Smarties Montessori is registered with the HSE and is part of the ECCE scheme whereby children can avail of a free preschool year. They also offer an afterschool programme for children from 2-3 pm. Collection from Fahy National School is available. For more information, contact Claire on 098 41065/087 7802612.

## Local Links and Annual Events

- Knitting with parents, grandparents and past pupils
- Grandparents' Day
- Holy Communion and Confirmation Preparation
- Annual 25 Card Drive
- Christmas Get Together
- Visit from Santa
- Beginning of School Year Mass
- Graduation Mass
- Halloween Dress up for Temple St. Hospital
- Annual Book Fair
- Bicycle Care and Safety
- Sports Quiz
- St. Bridget's Crosses
- Annual Easter Egg Race
- World Book Day
- Sports Day
- Football and Fitness classes
- Art and Nature Classes
- Greenschools Programme Activities



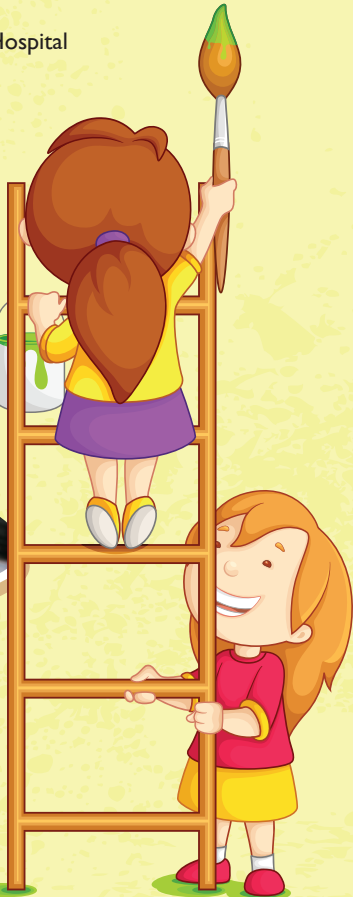
### Céad Mile Fáilte

Bá mhaith linn Céad Mile Fáilte a chur romhaibh go S.N. an Fhaitheche. Tá súil againn go mbeidh bhur bpáistí sona sa scoil seo. Táimid lán sásta go bhfaighidh na páistí oideachas den chéad scoth anseo, a bhéas mar bhunchloch dóibh ina saol amach anseo. Welcome to Fahy N.S. We hope that you and your children will be very happy with us.

Dr. Máire Nic An Fhailghigh, Príomhoide



"Ar scáth a chéile a mhairimid"  
"There's none of us as good as all of us"





# Welcome to S.N. an Fhaithe

## Mission Statement

S.N. an Fhaithe promotes Gospel values in a Christian learning community, where children can grow in knowledge and understanding and in the acquisition of skills, attitudes and values. We are fully committed to offering excellence in education by promoting the highest possible achievement for our pupils, encouraging children to grow within the Catholic faith and establishing the foundations for lifelong learning.

Our aim is that all children should leave S.N. an Fhaithe with the basic skills of reading, writing and numeracy, an enthusiasm for learning, a thirst for knowledge, an appreciation of their faith and the world they live in, and above all, many happy memories.

## Quote from WSE

"This is a very effective school, with a strong culture of collaboration and inclusion. The talented and enthusiastic staff is effectively led by a committed and supportive principal. A culture of collaboration and inclusion ensures that the needs of all pupils in the school are identified and addressed. Very effective strategies such as team teaching and peer tutoring are used to the benefits of all pupils in the school.

The highly effective principal inspires and enthuses her staff. She has succeeded in creating a culture that is characterised by co-operation, teamwork and a commitment to ongoing school improvement.

Assessment **of** and **for** learning is central to the work of the school. Very high standards are achieved in Mathematics. Innovative strategies are very effectively used in the development of literacy. Pupils are eager and motivated in their learning."

(WSE 2009)

## School Facilities

- Set down and pick up area for cars
- Purpose built facilities
- Broadband Internet Access
- School lunches available
- Over 4,000 Library books
- Aquarium
- Large Airy Self-contained classrooms
- Large fully equipped General-Purpose hall
- Large enclosed Play area and hard court area
- Use of local Fahy Rovers pitch
- After-school facility available in conjunction with Smarties

## School Uniform

The girls' uniform consists of a navy pinafore or pants, light blue blouse, navy tie, royal blue cardigan and white or navy socks or tights.

The boys' uniform consists of navy trousers, blue shirt, navy tie and royal blue jumper.

Our P.E. Uniform consists of pale blue t-shirt/polo shirt, navy track suit bottom and school tracksuit top with school crest (available through school)

## School hours

9.20 am to 2 pm for Infants and 9.20 am to 3 pm from 1st class to 6th class.

## Teaching and learning

S.N. an Fhaithe is a primary school for children of 4 years and over.

We aim to provide a caring, learning environment which facilitates the nurturing and development of each pupil's full educational potential.

S.N. an Fhaithe recognises that all pupils are individuals with different talents, strengths and needs, and we offer a broad comprehensive education to all pupils. We hope to nurture a sense of personal identity, self-esteem and awareness of one's particular abilities, aptitudes and limitations, combined with a respect for the rights and beliefs of others and to promote excellence and equality in the development of the educational potential of all pupils, including those that are disadvantaged through economic, social, physical or psychological difficulties. The school provides a very effective learning support programme, including supplementary teaching.

## Special Educational Needs

We aim to provide the atmosphere in which all children can reach their full potential, where the individual needs of all children are met, valued and understood. Our objective is to meet the individual needs of the children in an inclusive way, through a combination of in-class support (in the form of Team Teaching) and individual withdrawal. We aim to develop positive self-esteem and positive attitudes about school and learning in our pupils.

## Code of Behaviour

Respect, courtesy and safety are the underlying values of the School's Code of Behaviour. Children are encouraged to make good choices and exercise personal responsibility.

## Parents

Parent-Teacher meetings are held regularly during the year. Parents are welcome to meet with their child's teacher at any time and as often as is necessary. To facilitate this it is best to make an appointment through the office ahead of time.

## Mindfulness

Our pupils practice Mindfulness on a regular basis. In a world where stress is cited as one of the greatest occupational hazards, mindfulness-based practices are invaluable for teachers and children. Inviting mindfulness into the lives of children increases their capacity to become still and feel good about themselves. Mindfulness-based practices are simple yet profound and create a solid foundation on which to build self-worth, compassion and understanding. Introducing mindfulness into daily life supports us all in living with a sense of contentment and clarity and it nourishes the body, mind and emotions. Our school has featured on RTE's Nationwide programme and on Seachtain na Gaeilge. Check the following links: Mindfulnessmatters.ie featuring many of our pupils.

## Mathletes

Mathletes Challenges is a pioneering maths tournament for Ireland based on the Khan Academy approach to learning and teaching maths. Students compete online from January to May through the Khan Academy website, accumulating mastery points in their personal learning dashboards. Teachers across Ireland have found Khan Academy to be a great resource to engage their students in learning maths. Check Mathletes.ie

## Junior Entrepreneur Programme

The Junior Entrepreneur Programme is a 10 week education programme for senior primary school pupils. This innovative programme opens the minds of primary school pupils to the joy of entrepreneurship at a time in their lives when they are full of imagination and open to new possibilities. The programme helps participating pupils to develop a number of skills including literacy, writing, presentation, drawing, technology, research skills, numeracy, financial, consumer awareness, storytelling, listening skills, creative thinking, problem solving, team building and collaboration skills.

## Junior Achievement Programme

Junior Achievement Ireland encourages young people to remain in education and helps them develop the skills they need to succeed in a challenging world. Junior Achievement is part of a worldwide organisation reaching out to 9.3 million people every year.

Programmes begin at Primary school level, teaching children how they can impact the world around them as individuals, workers and consumers and continues through to secondary school, right up to the age 18, preparing students for their future careers. All Junior Achievement programmes are taught by business volunteers recruited from supporting organisations who are fully trained before they commence their programme. In our school we are supported by Allergan Ltd., Westport, Ireland.



A child is like a butterfly in the wind, Some can fly higher than others, but each one flies the best it can.

Why compare one against the other? Each one is different! Each one is special! Each one is beautiful!

